



Summary 2015

Lucie Vítková

Pro Silva Europe – Administrator

lucie.vitkova.09@aberdeen.ac.uk

Outline

- Annual reports
- Application forms
- Webpage

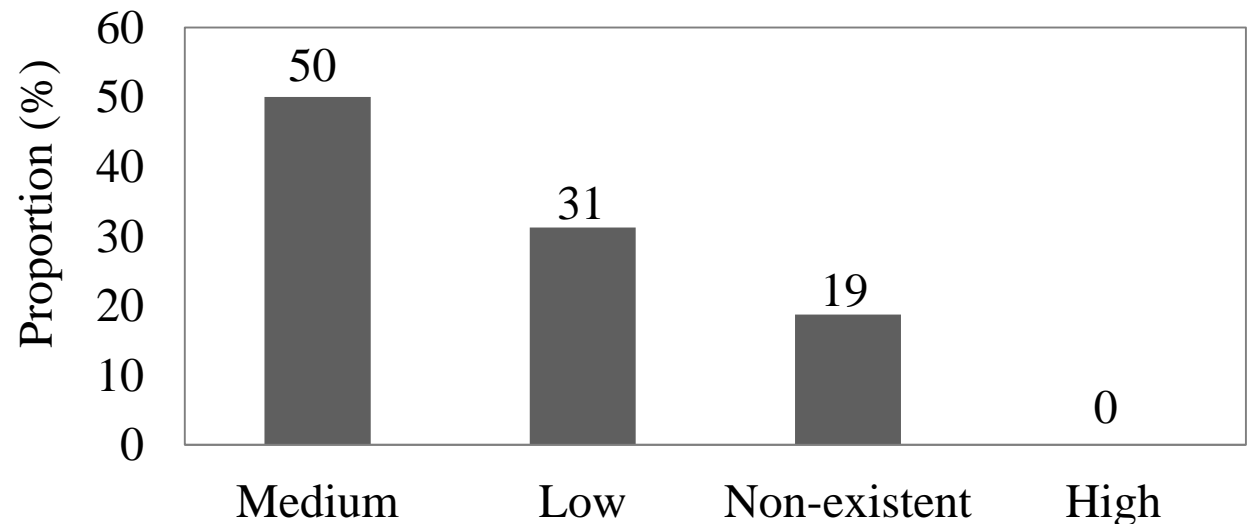


Annual reports - summary

- Countries reports returned: **17**
- Number of paying members: **5184**
 - min=8
 - max=2765
- Board and its structure: **consistent**

Organisation status	%
Independent organisation	44
Forestry Society	19
Sub-organisation of forestry society	19
Individual person(s)	13
Interest group	6

Potential political influence



Annual reports - summary

- Plans for following year:

Professional excursions

Abroad field trips

Demonstration sites establishment

Board meetings

Literature publications

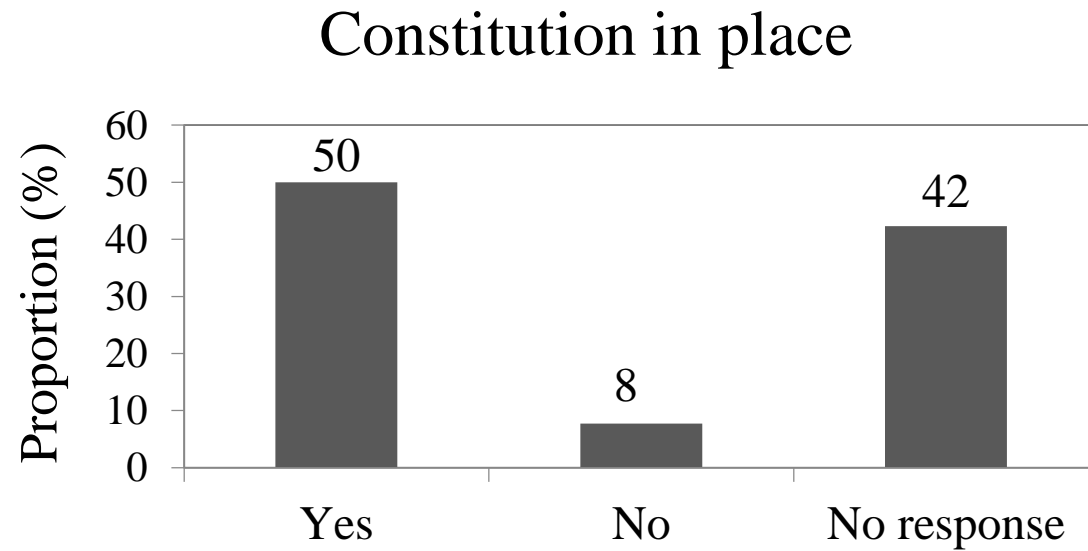
Student field trips

Annual reports - exemplary forests



Training Forest Enterprise Křtiny, Czech Republic (Sept 2015)

Constitutions



Application forms

- Interest from non-member countries
- Application form content:

Proposed board members

Number of members

Constitutions

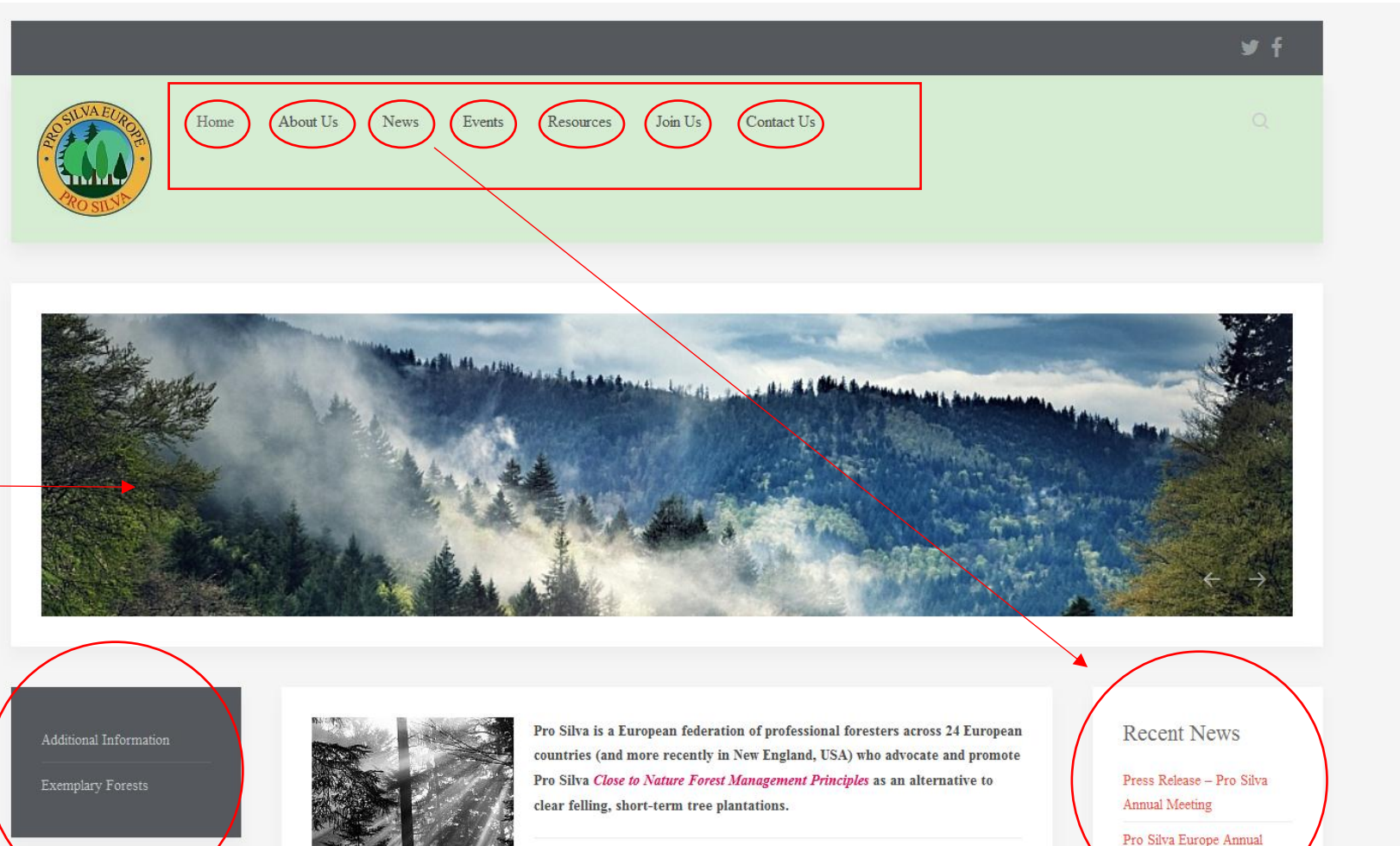
Person responsible for reporting

Anticipated plans

Webpage



Pro Silva Europe webpage



www.prosilvaeurope.org

Pro Silva Europe webpage

- To be updated:
 - Contact details for each country member
 - Exemplary forest template
- Networking:
 - Country member news and meetings
 - Raising awareness
 - Information transfer
 - Social media



